

product **AS05 057**
YP11 | alfa Yersinia

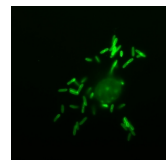
product information

background	Yersinia pseudotuberculosis is a food- and water-borne pathogen which causes self-limiting gastrointestinal infections in healthy humans.
immunogen	Yersinia pseudotuberculosis (YP11) grown at 26°C and fixed with PFA
antibody format	rabbit polyclonal serum lyophilized
quantity	200 µl for reconstitution add 200 µl of sterile water.
storage	store lyophilized/reconstituted at -20°C; once reconstituted make aliquots to avoid repeated freeze-thaw cycles. Please, remember to spin tubes briefly prior to opening them to avoid any losses that might occur from lyophilized material adhering to the cap or sides of the tubes.
tested applications	immunocytochemistry (IHC) immunofluorescence (ICC/IF)
additional information	to be added when available

application information

recommended dilution	1: 500 (ICC/IF)
expected apparent MW	n.a.
confirmed reactivity	Yersinia pseudotuberculosis
predicted reactivity	Yersinia pseudotuberculosis
not reactive in	no confirmed exceptions from predicted reactivity known in the moment
additional information	not available at the moment
selected references	not available at the moment

application example



Cells treated with **anti-YP11 antibodies** in dilution 1:500 and incubated at room temperature. FITC conjugated donkey anti-rabbit antibodies in dilution 1:200 (Jackson ImmunoResearch, code number: 711-096-152) were used as secondary antibodies.